



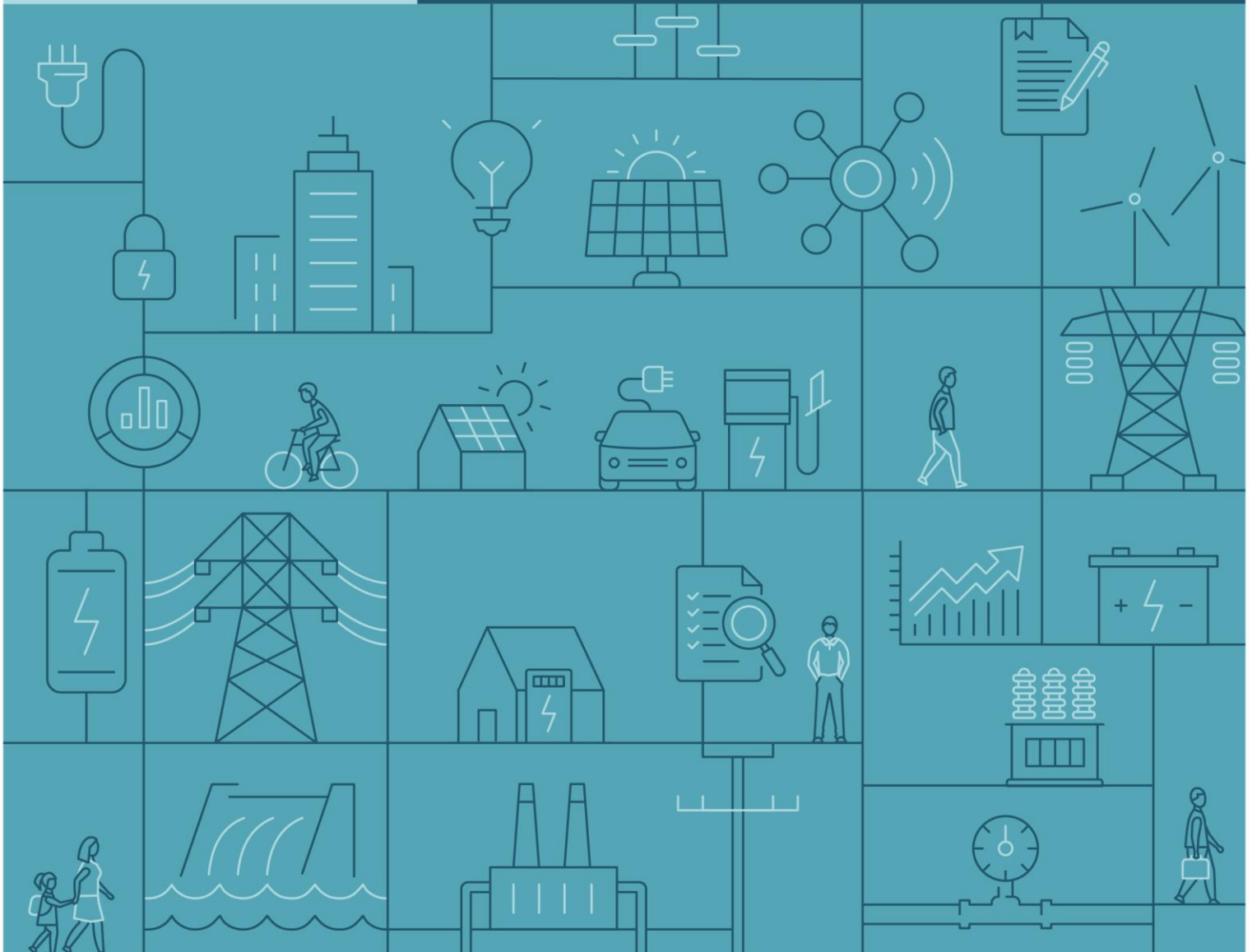
Consumer
Trustee



Addendum 1 to the Tender Guidelines - Tender Round 5

NSW Consumer Trustee

6 June 2024



Addendum 1 to the Tender Guidelines

IMPORTANT

This addendum (Addendum 1) to the Guidelines – Tender Round 5 LDS LTESA and SW REZ Access Rights (May 2024) (Tender Guidelines) is issued under section 5.38 of the Tender Guidelines. In accordance with section 5.38 of the Tender Guidelines, Proponents must prepare their Bids to consider and reflect the content of Addendum 1. The Tender Conditions also apply to this Addendum 1.¹

Capitalised terms in this Addendum 1 not otherwise defined are defined in the Tender Guidelines.

All references to 'Proponent' in this Addendum 1 refer to any person (who alone) or persons (who together, including Consortium Members), submit, or intend to submit, a Project Bid and/or Financial Value Bid, including any Bid Entity (as applicable).

1.1 Purpose of Addendum 1

This Addendum 1:

- modifies the Project Eligibility Criteria in the Tender Guidelines to clarify the exceptions to the criteria set out in Eligibility Criteria 10 (EC10); and
- adds to the list of essential Project information sought for Merit Criteria 5 assessment in the Tender Guidelines, to clarify the information required for Access Right projects.

1.1.1 Amendments to Project Eligibility Criteria

Tender Guidelines reference

Table 9 in Section 4.1.2 outlines the Project Eligibility Criteria. This Addendum 1 amends the 'EC10' row of that table.

Amendments

The Consumer Trustee has decided to make the following modifications to Eligibility Criteria 10 (EC10) in Table 9 of the Tender 5 Guidelines published on 22 May 2024. EC10 should now read as follows:

The Project is not in receipt of financial support in the form of project capital support, periodic payments or revenue underwriting from State or Commonwealth government (**Government Support**).

For this Tender Round, financial support does not include:

- Non-concessional funding provided by the Clean Energy Finance Corporation;
- Certificates accruing to the Project that is also available to projects beyond the specific Project in question (e.g. Large-scale Generation Certificates / Small-scale Technology Certificates / Energy Savings Certificates, Peak Reduction Certificates, Australian Carbon Credit Units);
- Funding that was provided solely to progress the feasibility of a Project during its development phase (e.g., certain ARENA (Australian Renewable Energy Agency) funding, pumped hydro recoverable grants);
- Payments for services awarded or appointed by EnergyCo in relation to REZs, network infrastructure projects, or priority transmission infrastructure projects.
- Any new policy announced by the NSW Government to support the development of renewable energy projects, including funding from the proposed NSW Energy Security Corporation.

¹ Section 5.1 of the Tender Guidelines.

1.1.2 Amendments to Essential Project information sought for Merit Criteria 5 assessment

Tender Guidelines reference

Table 11 in Section 4.2.2 outlines the essential Project information sought for Merit Criteria 5 assessment.

Amendments

The Consumer Trustee has decided to make the following additions to the essential Project information sought for Merit Criteria 5 assessment in Table 11 of the Tender 5 Guidelines published on 22 May 2024.

Two new information sources are being inserted as additional rows to Table 11:

Information source	Description	Where it will be assessed
Generation shape (Access Right Projects)	<p>Proponents are to provide their generation traces for the Project in MWh per interval specified.</p> <p>This should represent the AC output measured at the connection point after accounting for auxiliary losses and inverter ratings, but excluding losses due to system degradation.</p> <p>Proponents should provide the most accurate generation traces they have available through either measured or modelled data. This is to be provided for three specified historical weather years (dates aligned with financial years).</p>	Wholesale market benefits
Dispatchable shape (Access Right Projects, as required)	<p>If a Project involves technologies that are not weather-dependent, they will be asked to provide a separate generation trace indicating the output trace of the dispatchable technology component and text description of how this component is expected to operate.</p>	Wholesale market benefits

This information is only requested for Projects seeking an Access Right that have a variable renewable energy component. This information will be requested via a Returnable Schedule in Stage B.